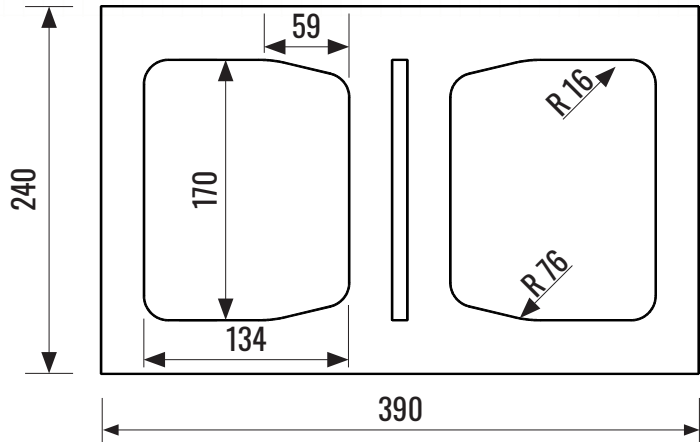
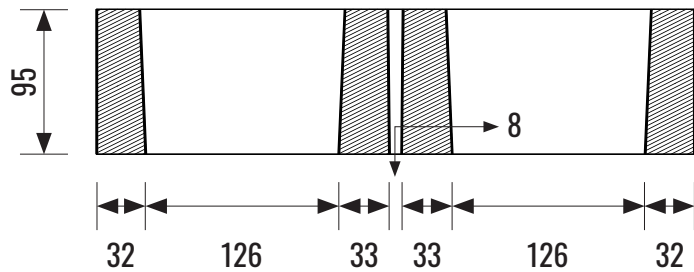




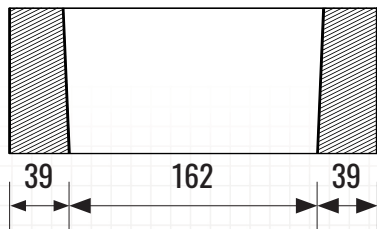
### BREAKER HALF HEIGHT



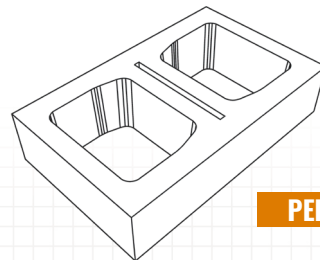
TOP VIEW



FRONT X-SECTION

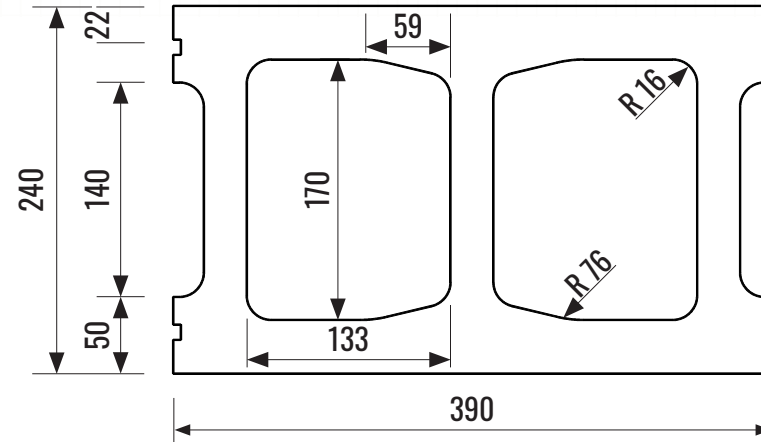


END X-SECTION

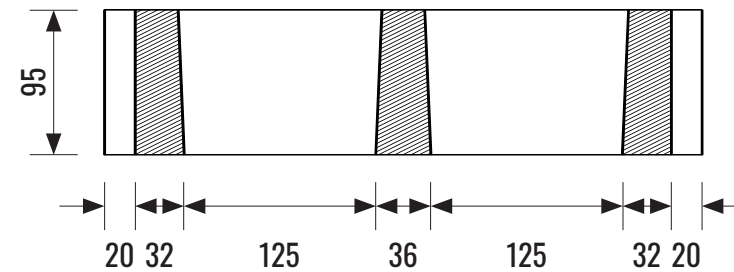


PERSPECTIVE VIEW

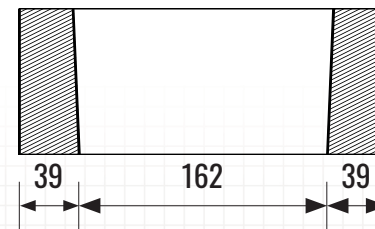
### STRETCHER HALF HEIGHT



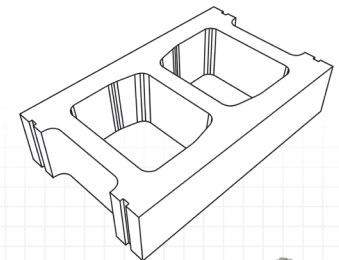
TOP VIEW



FRONT X-SECTION



END X-SECTION



**PLEASE NOTE:** Products are made from natural material sources and therefore color variation and efflorescence may occur.

#### PACKAGING:

Pieces Per Pallet: 60 Breakers + 60 Stretchers  
 Weight Per Piece: 10.7 kg (23.5 lbs)  
 Weight Per Pallet: 1336 kg (2940 lbs)  
 Coverage Per Piece: 0.4 sq. ft (48 sq. ft per pallet)

#### DIMENSIONAL TOLERANCES:

Meets the requirements of CSA A165.1 Concrete Masonry  
 Length: -3 to +3 mm  
 Width: -2 to +2 mm  
 Height: -3 to +2 mm

#### PHYSICAL PROPERTIES:

Meets the requirements of CSA A165.1 Concrete Masonry  
 Compressive Strength: Min 15 MPa @ 28 Days  
 Absorption (%): 8.0% Maximum @ 28 Days