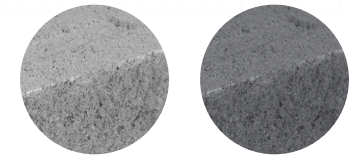




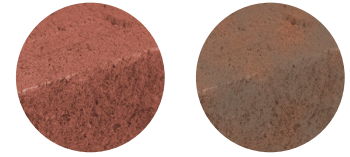
STANDARD COLOURS



NATURAL GREY

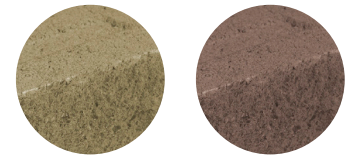
CHARCOAL

AVAILABLE ON REQUEST



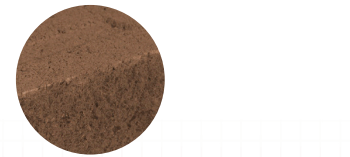
RED

CASEY-MIX

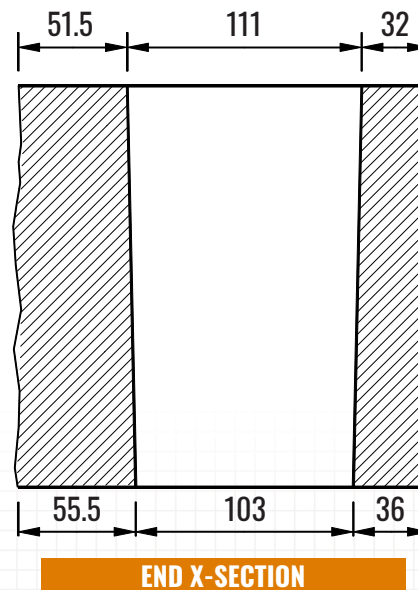
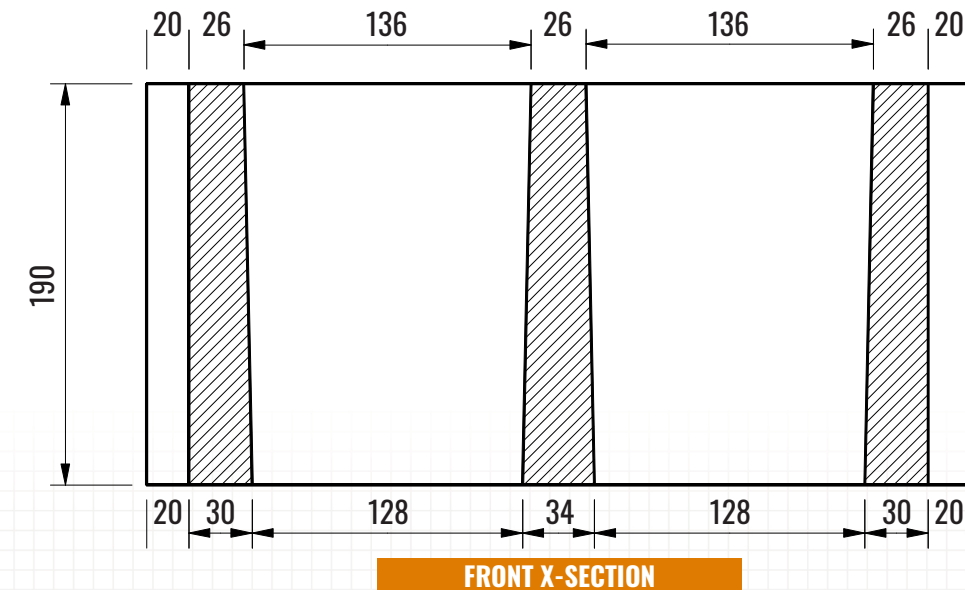
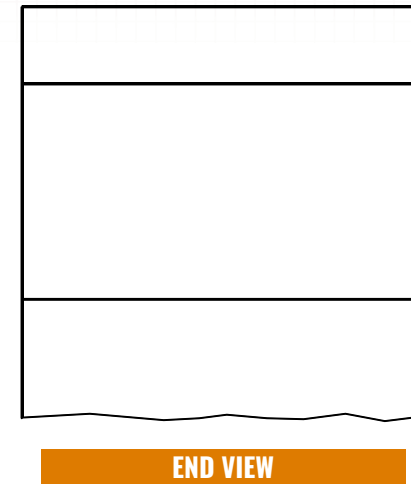
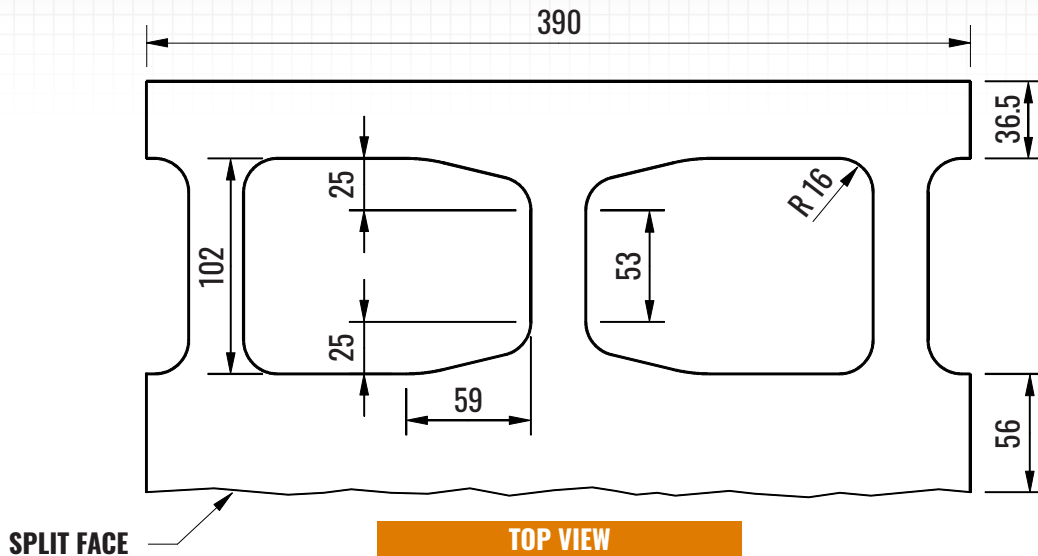


BUFF

BROWN



TAN



PLEASE NOTE: Products are made from natural material sources and therefore color variation and efflorescence may occur.

PACKAGING:

Pieces Per Pallet: 75
 Weight Per Piece: 19.96 kg (44 lbs)
 Weight Per Pallet: 1500 kg (3307 lbs)
 Coverage Per Piece: 0.8 sq.ft

DIMENSIONAL TOLERANCES:

Compliant with CSA A165.2 Concrete Brick Grade 1
 Length: -2 to +2 mm
 Width: -2 to +2 mm *not including
 Height: -2 to +2 mm rough split face

PHYSICAL PROPERTIES:

Compliant with CSA A165.2 Concrete Brick Grade 1
 Compressive Strength: Min. 25 MPa @ 28 Days
 Absorption (%): 8.0 % Maximum @ 28 Days
 Classification: A165.2 3.3 Grade 1