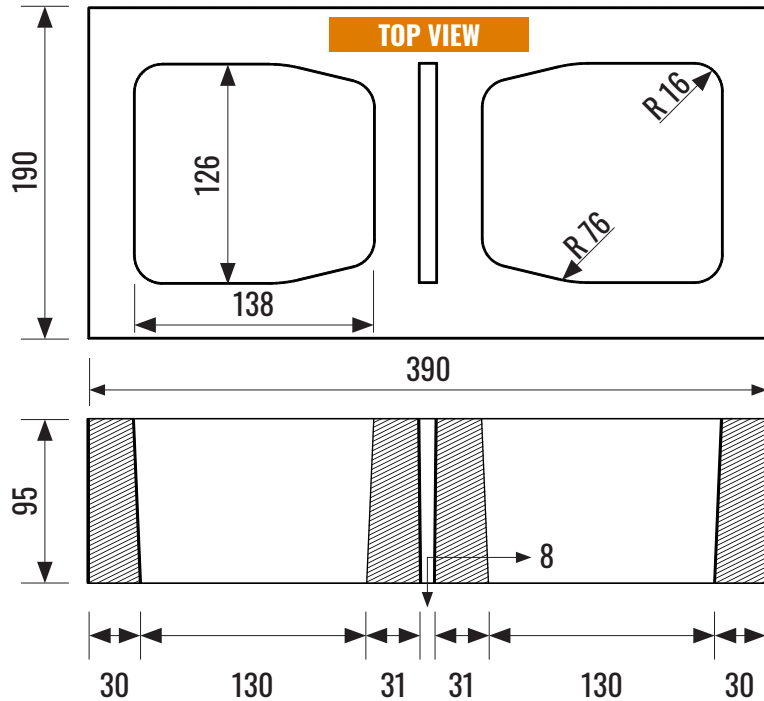
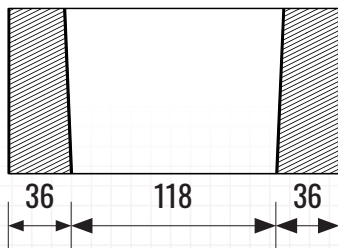
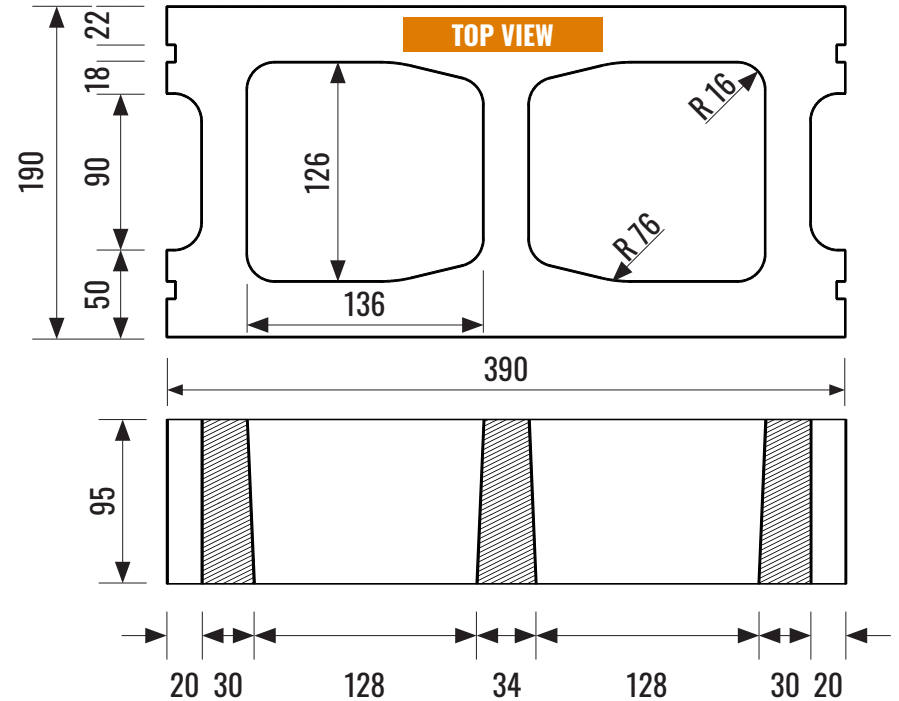




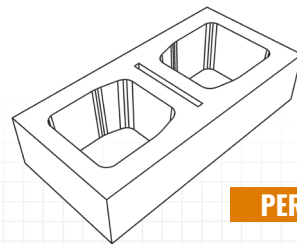
BREAKER HALF HEIGHT



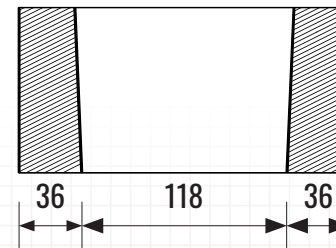
STRETCHER HALF HEIGHT



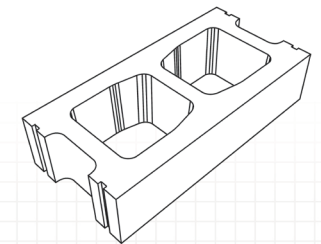
END X-SECTION



PERSPECTIVE VIEW



END X-SECTION



PLEASE NOTE: Products are made from natural material sources and therefore color variation and efflorescence may occur.

PACKAGING:

Pieces Per Pallet: 50 Breakers + 100 Stretchers
 Weight Per Piece: 8.64 kg (19 lbs)
 Weight Per Pallet: 1295 kg (2850 lbs)
 Coverage Per Piece: 0.4 sq. ft (60 sq. ft per pallet)

DIMENSIONAL TOLERANCES:

Meets the requirements of CSA A165.1 Concrete Masonry
 Length: -3 to +3 mm
 Width: -2 to +2 mm
 Height: -3 to +2 mm

PHYSICAL PROPERTIES:

Meets the requirements of CSA A165.1 Concrete Masonry
 Compressive Strength: Min 15 MPa @ 28 Days
 Absorption (%): 8.0% Maximum @ 28 Days